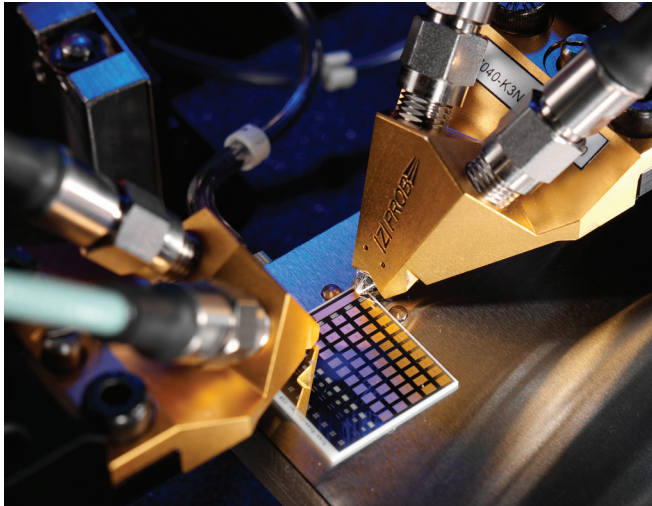


# Cascade Microtech, Inc.

## SPECIFICATION SHEET



High-accuracy, high-quality  
calibration substrates

# CSR

For RF and Microwave Wafer Probes

- 100% laser trimmed LOAD resistor
- DC accuracy (LOAD):  $50 \Omega \pm 0.15 \Omega$  (0.05 % typical)
- Best stability over temperature from 10K to +150°C (maximum drift:  $\pm 0.3\%$ )

- Highest accuracy, verified with NIST methods
- Supports LRM+, RRMT+, SOLT, SOLR, TRL and other calibration methods
- Long lifetime with rugged, hard-gold standards

### |Z| PROBE / DUAL |Z| PROBE / MULTI |Z| PROBE / |Z| PROBE POWER

Configuration	Pitch ( $\mu\text{m}$ )	Calibration Substrate
GSG	50 to 150	CSR-9
	100 to 250	CSR-8
	300 to 500	CSR-4
	550 to 1250	CSR-15
GS / SG	50 to 250	CSR-6
	300 to 500	CSR-5
	550 to 1250	CSR-16
GSGSG	100	CSR-30
	125	CSR-35
	150	CSR-31
	175 to 200	CSR-32
	250	CSR-33
	500	CSR-34

## |Z| PROBE / DUAL |Z| PROBE / MULTI |Z| PROBE / |Z| PROBE POWER

Configuration	Pitch ( $\mu\text{m}$ )	Calibration Substrate
GSSG	100	CSR-40
	125 to 175	CSR-41
	200 to 250	CSR-43
	500	CSR-44
SGS	100	CSR-50
	125 to 175	CSR-51
	200 to 250	CSR-52
	500	CSR-54
GSG, SG, GS	100 to 300	CSR-101 right angle standards NSEW

## |Z| PROBE PCB

Configuration	Pitch ( $\mu\text{m}$ )	Calibration Substrate
GSG	550 to 1250	CSR-15, CSR-20*
	1500 to 2500	CSR-17, CSR-20*
	2750 to 4000	CSR-22*
GS / SG	550 to 1250	CSR-16, CSR-21*
	150 to 2500	CSR-18, CSR-21*
	2750 to 4000	CSR-23*

\* Calibration standards on PCB, reduced bandwidth up to 4 GHz, robust solution for production test. For high performance tests use ceramic substrates CSR-15 to 18.

© Copyright 2011 Cascade Microtech, Inc.  
All rights reserved. Cascade Microtech  
and |Z| Probes are registered trademarks  
of Cascade Microtech, Inc. All other  
trademarks are the property of their own  
respective owners.

Data subject to change without notice

CSR-SS-1011

**Cascade Microtech, Inc.**  
toll free: +1-800-550-3279  
phone: +1-503-601-1000  
email: [cmi\\_sales@cmicro.com](mailto:cmi_sales@cmicro.com)

**Cascade Microtech GmbH**  
phone: +49-811-60005-0  
email: [cmg\\_sales@cmicro.com](mailto:cmg_sales@cmicro.com)

**Cascade Microtech Japan**  
phone: +81-3-5615-5150  
email: [cmj\\_sales@cmicro.com](mailto:cmj_sales@cmicro.com)

**Cascade Microtech Shanghai**  
phone: +86-21-3330-3188  
email: [cmc\\_sales@cmicro.com](mailto:cmc_sales@cmicro.com)

**Cascade Microtech Singapore**  
phone: +65-6873-7482  
email: [cms\\_sales@cmicro.com](mailto:cms_sales@cmicro.com)

**Cascade Microtech Taiwan**  
phone: +886-3-5722810  
email: [cmt\\_sales@cmicro.com](mailto:cmt_sales@cmicro.com)