

General Features

The EasyLOAD-615A™ software provides avionics developers and airline operators a Data Loader tool based on ARINC615A Standard. For AFDX/ARINC664 operations target 'End Systems' are accessed by AIM's AFDX/ARINC664 modules residing in the Local Host or Remote Server PC. The AIM 615A Data Loader can also work with standard Ethernet over a regular LAN interface in the host computer.

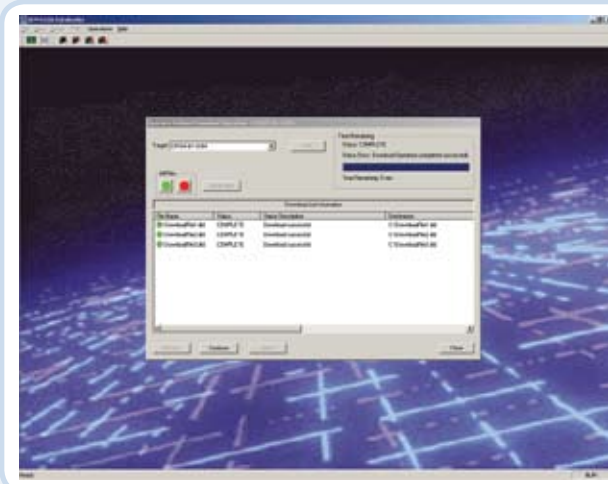
The EasyLOAD-615A™ application is a Windows GUI application supporting all ARINC615A operations. EasyLOAD-615A™ offers a Remote Interface for execution of Data Loader commands. Furthermore a direct access to the TFTP DLL of EasyLOAD-615A™ is supported optionally.

EasyLOAD-615A™



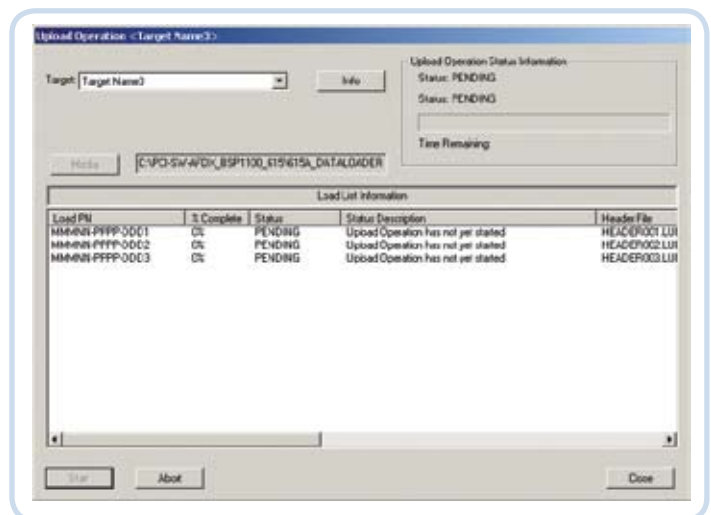
Software for
Windows

Data loading from your PC has never been so simple using AIM's EasyLOAD-615A™ Software for Windows



Key Features

- Easy to use GUI (Graphical User Interface) for Windows XP/Vista/7
- Supports Data Loading over standard Ethernet and AFDX/ ARINC664
- Support for ARINC615A-1 and 615A-2 including all Operations
 - Find/ SNIP
 - Information
 - Upload
 - Media Defined Download
 - Operator Defined Download
 - Multi Upload
- Support for Building and Verifying ARINC665-1/2/3 compliant Media Sets
- Define multiple Targets including Target-Identification, AFDX-, ARINC615A- and TFTP-Options
- Save and Load Target Configurations in CSV-Style Files
- Multiple simultaneous Data Loading Operations to different Targets supported
- ARINC615A-3 'Dally' and 'Port' Options supported
- Quick Look Download Status Displays/ Error Warnings
- Remote Interface for Control via external Applications
- Online-Help/ Context-Sensitive Help



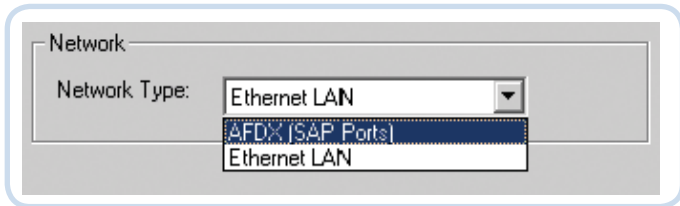
Avionics Databus Solutions



ARINC615A Data Loading Interfaces

Users can select one of two Network Types to perform the download:

- AFDX SAP Ports (AIM AFDX Interface)
- Standard Ethernet Port (using host PC 10/100Mbit NIC)



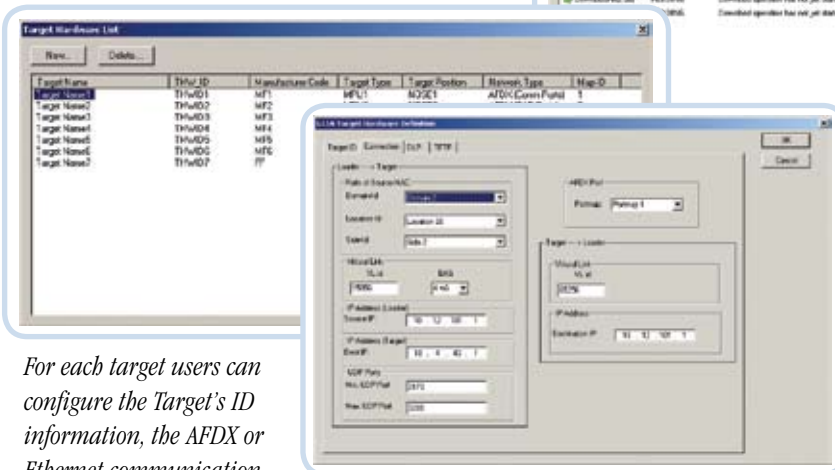
Target Connections

Key Features:

- Operates using AFDX or Standard Ethernet Connections
- Manually or dynamically FIND Target 'End-Systems'
- Configure Target's ID Information, AFDX or Ethernet Communication Parameters, and 615A Data Load Protocol plus TFTP Protocol Characteristics

Connections to Target 'End-Systems' can be defined either manually or dynamically taken from the FIND.

Users can manually add, configure and remove targets from the Target Hardware List.



For each target users can configure the Target's ID information, the AFDX or Ethernet communication parameters, the 615A Data Load protocol and the TFTP protocol characteristics.

All options are selected through the Target Hardware Definition window.

Operations

Multiple operations can be executed simultaneously towards multiple target end systems. The supported operations are:

- Find • Information • Upload • Media Defined Download
- Operator Defined Download • Multi-Upload

AIM Office Contacts:

AIM GmbH

Sasbacher Str.2
79111 Freiburg
Germany

Tel: +49 761 45 22 90
Fax: +49 761 45 22 93 3
email: sales@aim-online.com

AIM GmbH

Vertriebsbüro München
Terofalstrasse 23 a
80689 München
Germany

Tel: +49 89 70 92 92 92
Fax: +49 89 70 92 92 94
email: salesgermany@aim-online.com

Find Operation

Find all existing 615A-Targets in the network by sending a FIND/ SNIP broadcast request. The obtained Target ID information can be used for a new Target-Definition.

Information Operation

The Information Operation allows the user to perform a 615A information operation with a defined target to obtain information on the configuration of the Target Hardware and Loadable Software parts.

Upload Operation

Users can select which target to execute the operation towards. The upload source media can reside on the local host or any accessible storage device on the local area network.

Media Defined Download

The user can select which target to execute the operation towards. The target media which is to receive the downloaded files can reside on the local host or any accessible storage device on the local area network.

Operator Defined Download

The Operator Defined Download Operation allows the user to request a list of downloadable files from any available target End System.

Multi-Upload

The Multiple-Upload allows the user to upload multiple ARINC665 files from the Data Loader to multiple target devices in the network from a single dialogue. The upload list can be stored as file and loaded again, so multiple targets can be loaded efficiently.

Ordering Information

EasyLOAD-615A™

ARINC615A Data Loader for AIM AFDX Interfaces or Standard Ethernet
Executable Code for Windows XP/Vista/7

EasyLOAD-615A-TFTP

ARINC615A Data Loader for AIM AFDX Interfaces or Standard Ethernet
Including Import Libraries and Header Files for TFTP Library usage with customer applications
Executable Code for Windows XP/Vista/7

EasyTFTP

Import and Runtime Libraries and Header Files for TFTP Library usage with customer applications for Windows XP/Vista/7

© AIM GmbH 01/2011 • Specifications are subject to change without notice.

AIM UK

Cressex Enterprise Centre
Lincoln Road
High Wycombe
Bucks, HP12 3RB
UK

Tel: +44 1494 446844
Fax: +44 1494 449324
email: salesuk@aim-online.com

AIM-USA

Seven Neshaminy Interplex
Suite 211
Trevose, PA 19053
USA

Tel: 267-982-2600
Toll free: 1-877-520-1553
Fax: 215-645-1580
email: salesusa@aim-online.com