

MK BLTU – Bond & Loop Test Unit

Automatic Computer Controlled combined Bond & Loop Test Unit

Model **BLTU** - Bond & Loop Test Unit

PROVEN AUTOMATIC ELECTRICAL TESTING SOLUTIONS



DESCRIPTION

The MK BLTU is a portable unit for measuring the resistance of bonding points on large structures. It is ideally suited to the high-specification requirements of aircraft bond testing procedures.

MAIN FEATURES

- Tough polypropylene enclosure
- Flip-off protective lid
- LCD 8" Touchscreen integrated monitor
- Smart Li-Ion batteries 'hot-swappable'
- Lightweight
- Carrying handle
- Soft-start current source prevents arcing
- On-screen instructions
- Auto and manual modes
- Wireless data upload & download
- Fast startup
- USB port
- Network Port

BOND TEST MEASUREMENT

Current (DC)	Programmable 1mA to 2000mA
Resistance Range	0.2mΩ to 2Ω
Resistance resolution	0.1mΩ
Resistance Accuracy	1% ±0.2mΩ @ 2000mA

LOOP TEST MEASUREMENT

Current (AC)	1Arms
Frequency	1kHz
Resistance Range	1mΩ to 200mΩ
Resistance resolution	0.1mΩ
Resistance Accuracy	1% ±0.2mΩ

SYSTEM OPTIONS

Temperature compensation
10Amp Bond Current

DIMENSIONS

Length	270mm (10.63")
Depth	246mm (9.69")
Height	124mm (4.88")
Weight	<4kg

Under the MK Test Systems Continuous Improvement Programme, specifications are subject to change.

www.mktest.com

sales@mktest.com

tel. +44(0)1823 661100

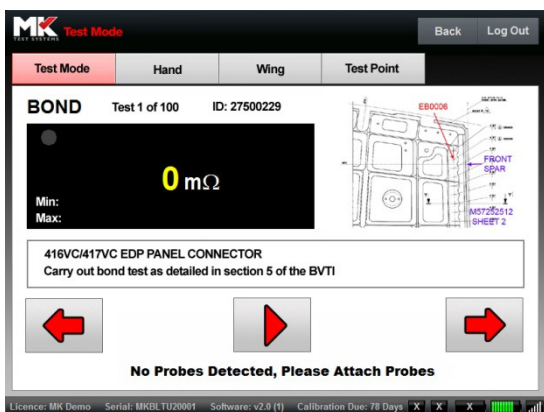
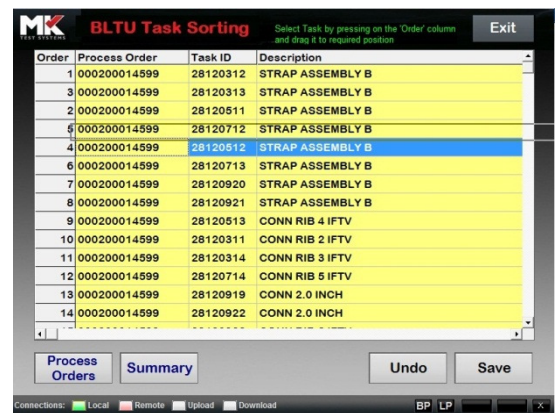
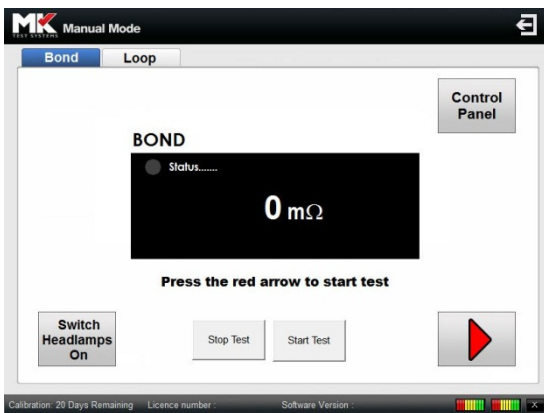
fax. +44(0)1823 661160



Product information update

MK BLTU – Bond & Loop Test Unit

Automatic Computer Controlled combined Bond & Loop Test Unit



Product information update

MK BLTU – Bond & Loop Test Unit

Automatic Computer Controlled combined Bond & Loop Test Unit

Panel PC Control

- All functions controlled via MK software.
- Automatic control of test process

Combined Bond and Loop Tester

Battery Powered

- No mains cable required during operation

Hot Swap Battery

- 2 Battery ports, hot swap function to eliminate downtime
- Optimised power efficiency to prolong battery life

Portable

- Compact and lightweight for single person operation.

Rated accuracies to meet most demanding Aerospace requirements

Manual Mode

Automatic Mode

- Automatic download of test requirement
- Automatic creation of test sequence / Test programme
- Simple Step-by Step graphical operator instruction
- Automatic logging and upload of test results

Active Probe , increased automation

- On-Probe LED indication of test status
- On-Probe push button to step through test progress
- No need to touch test unit during automatic test process

Probe and Clamp recognition

- System ensures correct clamps and probes used

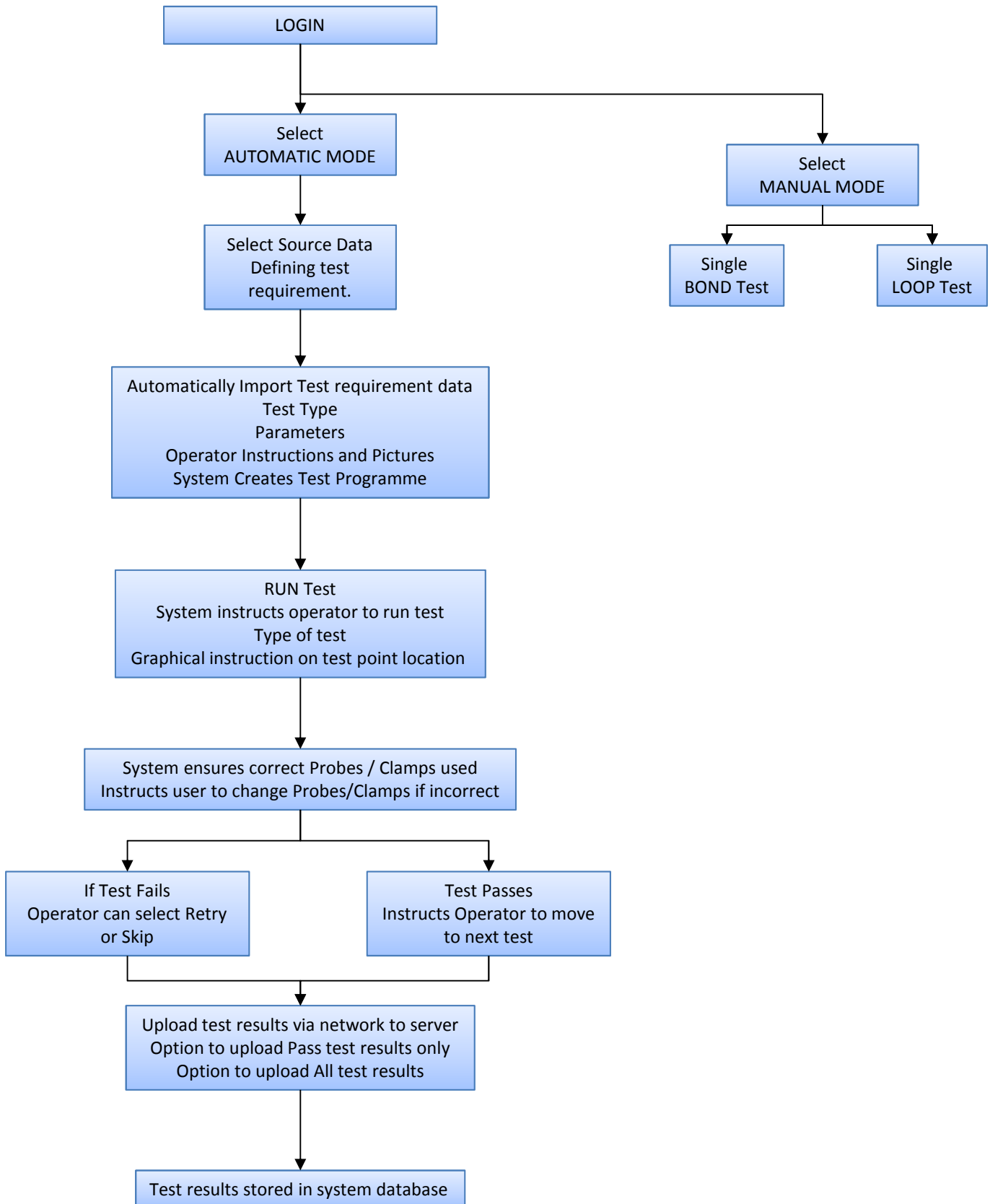
Automatic progress through test

Software controlled Calibration

- Calibration can be carried out by customer using MK calibration kit

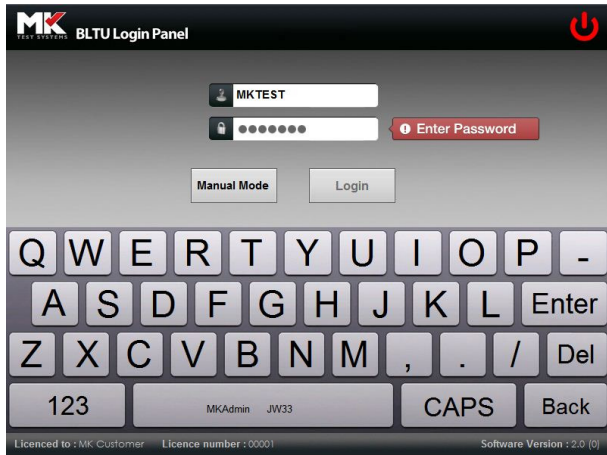
MK BLTU – Bond & Loop Test Unit

Automatic Computer Controlled combined Bond & Loop Test Unit

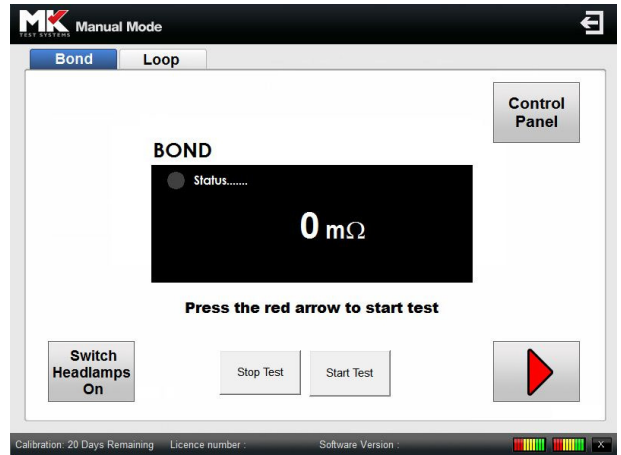


MK BLTU – Bond & Loop Test Unit

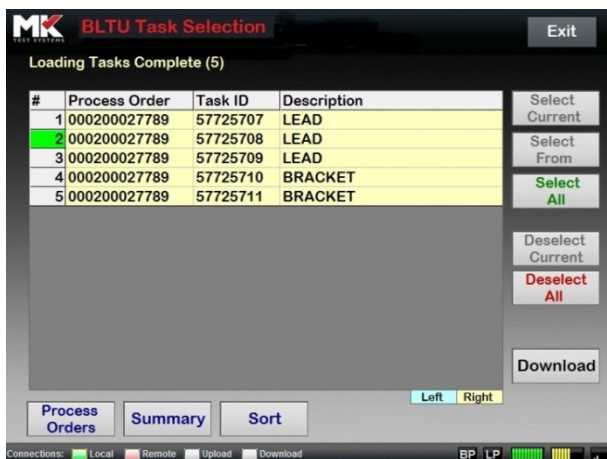
Software



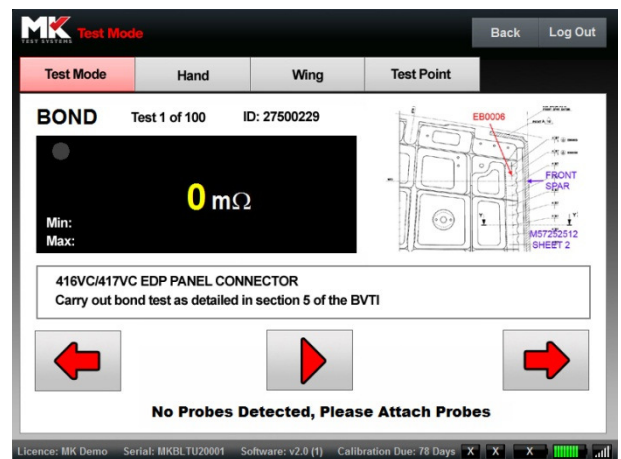
Login



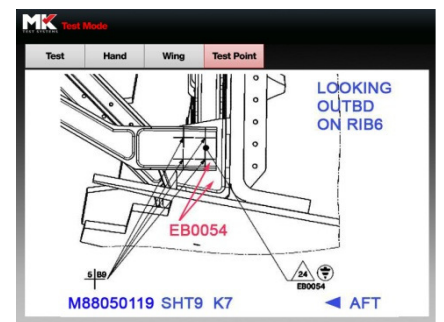
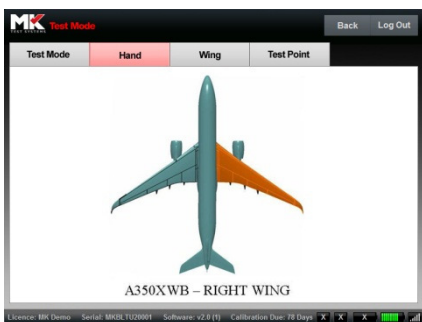
Manual mode Bond & Loop Test



Download test requirement data



Automatic test mode progress screen



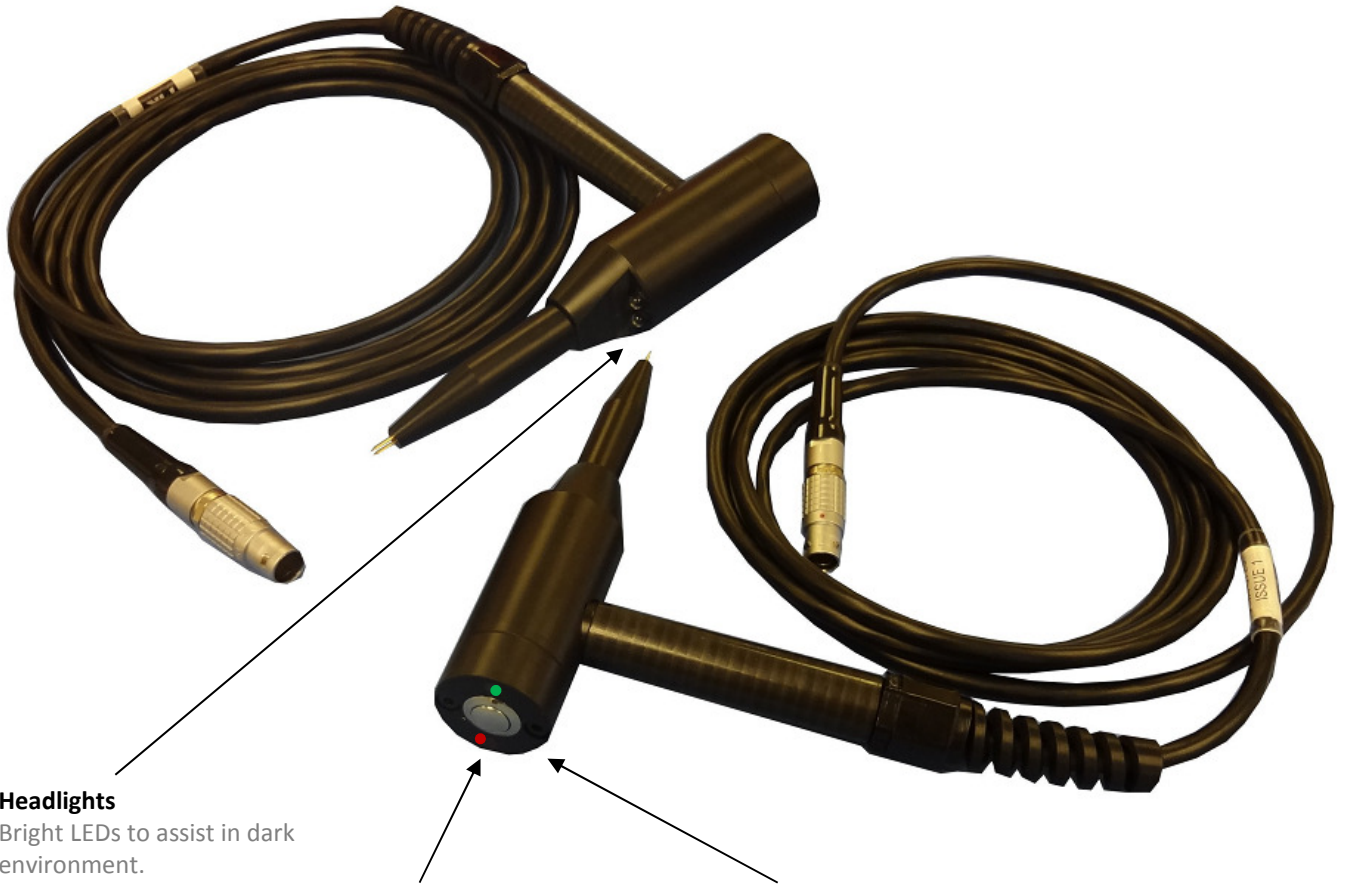
Automatic test mode Operator Guidance Screens



Product information update

MK BLTU – Bond & Loop Test Unit

Active Bond Test Probes



Headlights

Bright LEDs to assist in dark environment.

Red & Green Pass/Fail LEDs

To indicate Bond test status during automatic test process.

Push Button Progress Switch

Operator can accept results and move to next test by pushing button



The Active Bond Test Probes indicate the Pass or Fail status of a test via the Green and Red LEDs.

The Pushbutton on the rear of the probe allows the operator to accept a test result and progress to the next test , without touching the test unit itself.

MK BLTU – Bond & Loop Test Unit

Calibration

MK Calibration

Settings Bond Loop Range 1 Loop Range 2 Control Panel

Click Apply to save or Bond to restart

Measured mOhm **30653.57 mOhm** Apply

Actual mOhm 30653.57

1 2 3 4 5 6 7 8 9 0 -
! " £ \$ % ^ ' ~ * Enter
() [] < > - + . / Del
ABC CAPS Back

Mode: Admin Calibration Due: 01/01/2012

MK Back

MK Certificate of Calibration **BLTU**

Date of Issue: 16/02/2012 Certificate No: MK20120216180235
Expiry Date: 16/05/2012 BLTU Serial No: MKBLTU20001








	Status: Passed	
BOND	1 Applied R: 0.200 mOhm	Measured R: 0.213 mOhm
	2 Applied R: 1.668.000 mOhm	Measured R: 1.668.800 mOhm
	Gain: 0.0003 mOhm	Offset: -0.0750 mOhm
	Gain Old: 0.0003 mOhm	Offset Old: -0.0620 mOhm
	Cal Date: 16/02/2012	Expire Date: 16/05/2012
DP 1	Status: Passed	
	1 Applied R: 4.900 mOhm	Measured R: 4.887 mOhm
	2 Applied R: 11.540 mOhm	Measured R: 11.217 mOhm

Print Save

Licence: MK Demo Serial: MKBLTU20001 Software: v2.0 (0) Calibration Due: 87 Days LI LD [Battery Icon] X [Signal Icon]



MK BLTU – Bond & Loop Test Unit

	Part Number	Description
	BLT-033	MK Test Systems BLTU Bond and Loop Test Unit
	BLT-0730	Additional Batteries
	BLT-0731	Battery Charger Unit
	BLT-0702	Active Bond Test Probes 2 per set
	BLT-0706/7	Loop Test Clamps 1 Inject clamp per set (part BLT-0706) 1 Detect clamp per set (part BLT-0707)
	BLT-0732	BLTU Data Adaptor Enables USB and Ethernet connectivity
	BLT-0230	Calibration Kit Enables the end user to calibrate the BLTU

NOTE.
Customised and application specific probes and clamps available. Long nose probes, clamps for large diameter cables etc. Ask MK for details.