

Keysight Technologies

VEE Pro 9.32

Data Sheet

Keysight's software products make you more productive, so you can focus on solving engineering problems, not on programming. Keysight VEE is a powerful intuitive graphical language environment that provides you the quick and easy path to measurement analysis.

Keysight VEE 9.32 Features

- New sample programs for the Keysight Technologies, Inc. 33500 series function/arbitrary waveform generator, 34411A digital multimeter and DSO/MSO oscilloscopes
- General vTools and USB Modular DAQ vTools
- Windows 8 operating system supportability
- Microsoft Office Excel 2013 supportability
- Multithreading and multicore programming support
- SCPI completion
- Private UserFunction
- LXI support
- Conditional breakpoints and breakpoints window
- Error call stack
- Integrated database support
- Supporting custom menu in XML format
- Enhanced default preferences dialog box
- NaN and Infinity support
- Toolbars for VEE objects
- More Windows standard dialog boxes

For Faster Programming

Keysight VEE (Visual Engineering Environment) is an easy-to-use graphical language environment that provides a quick path to measurement and analysis.

- Select and edit objects from pull-down menus or toolbars and connect them to each other by wires to specify the program's flow, mimicking the order of tasks you want to perform.
- Illustrate objects and connections between them with color coding for easy program differentiation.
- Create programs easier and faster with SCPI completion, code completion and code insight.
- Debug programs on the fly and quickly test and update codes with Conditional Breakpoints, Watch Window and Output Window.
- Improve your system performance with multithreading technology and multicore programming.

Keysight VEE can be used as a standalone solution or as part of a custom in-house solution, and includes all the capabilities and support you need to be successful.

Test and Measure Efficiently

Keysight VEE verifies instrument addresses and other parameters at runtime and allows users to change these parameters without reconfiguring programs. The software handles different data types automatically, providing automatic conversion and data handling capabilities with minimal complex programming.

Generate optimized codes with Keysight VEE's compiler, and further enhance those codes with the built-in Profiler. The Profiler analyzes critical sections of code to save development time when fine-tuning the programs.

Keysight VEE Pro comes standard with a RunTime execution engine that provides the ability to distribute run-only Keysight VEE Pro applications at no additional cost. The users are allowed to redistribute the RunTime installer.

A Better User Experience

Designed for engineers and scientists who need to quickly create and automate measurements and tests, Keysight VEE comes with features that help users do their job faster and more effectively.

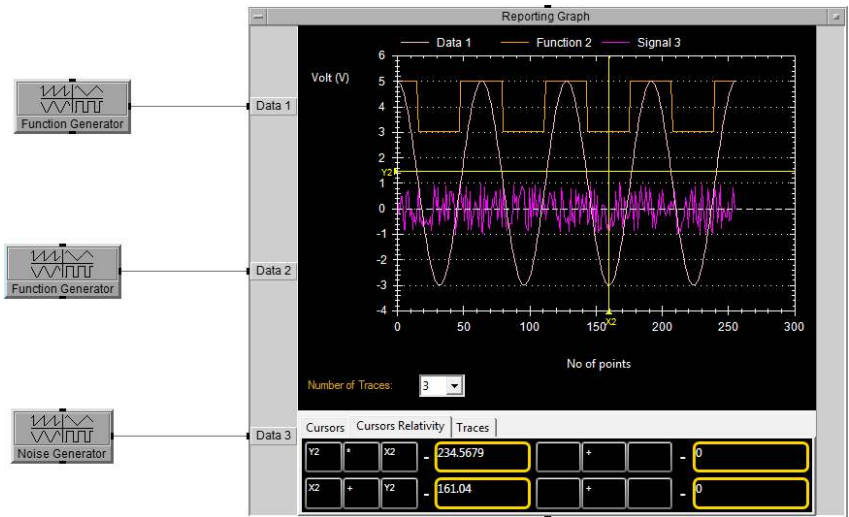
The Modern Integrated Development Environment with dockable tool windows gives users a more modern and streamlined programming experience, while numerous sample programs, demos and context-sensitive help provide support for beginner and veteran programmers alike.

Keysight VEE now includes new sample programs with simple VEE programming for the latest Keysight instruments – the Keysight 33500 series arbitrary/function generator, Keysight 34411A digital multimeter and InfiniiVision 2000X/3000X/5000/6000/7000 series DSO or MSO oscilloscopes.

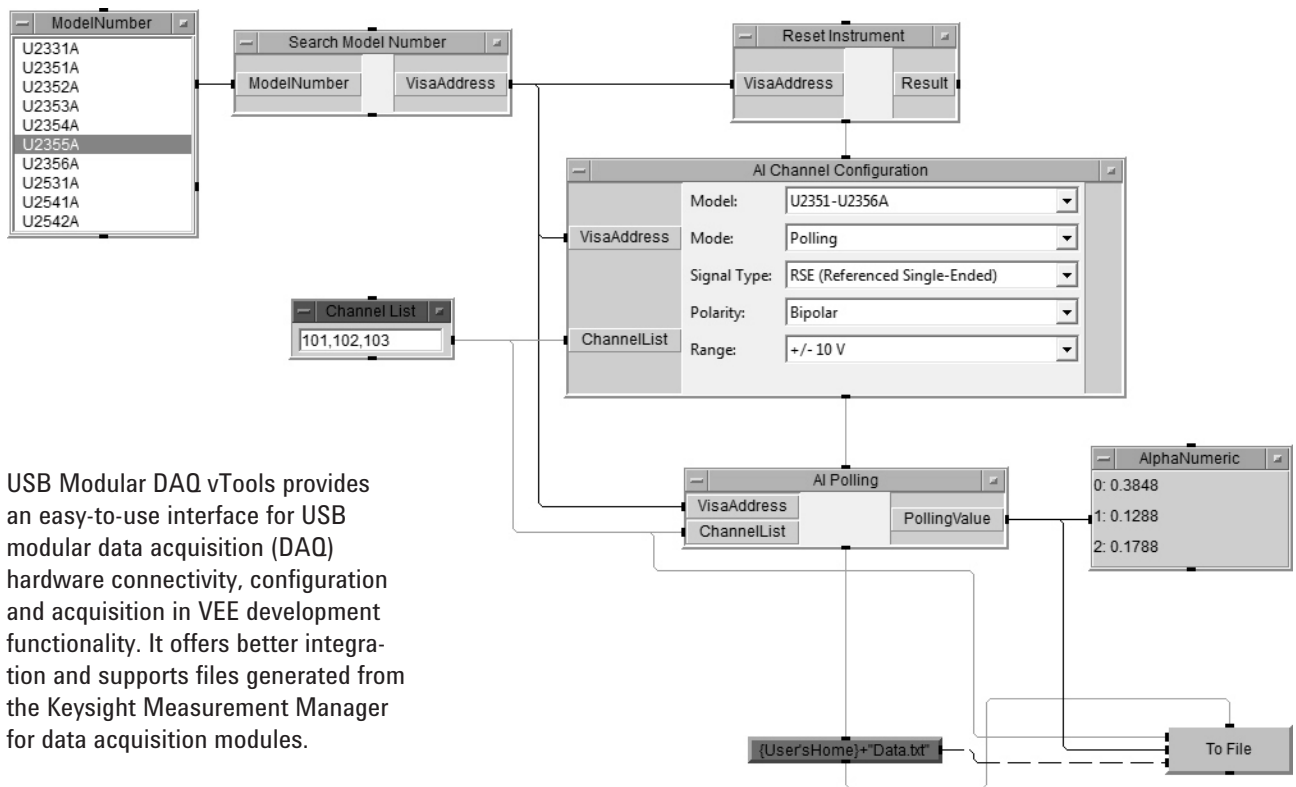
Simplify your programming with vTools

There are two available vTools: General vTools and USB Modular DAQ vTools.

General vTools offers an easy-to-use interface for data analysis, including support for simple trending data analysis, statistical filters, alert and events, data scaling and data charting and graphing. It contains enhanced reporting graph objects with panning, scroll zoom, graphic saving features and printing capabilities. General vTools also supports objects and components such as averaging and marker lookup.



Enhanced reporting graph



USB Modular DAQ vTools provides an easy-to-use interface for USB modular data acquisition (DAQ) hardware connectivity, configuration and acquisition in VEE development functionality. It offers better integration and supports files generated from the Keysight Measurement Manager for data acquisition modules.

USB Modular DAQ vTools is only available for the Keysight U2300A and U2500A series USB modular data acquisition.

Download vTools for free at www.keysight.com/find/vee_download

Sample programs from USB Modular DAQ vTools help you understand how to set up channel settings and poll data.

Software and Hardware Compatibility

Keysight VEE interfaces with popular software and hardware tools, and provides easy, menu-driven control of database. Keysight VEE uses the .NET Framework and ActiveX to simplify common tasks, and supports industry standard instrument drivers, including IVI-COM and VXIplug&play. Users may also use SCPI or the .dll library supplied with many instruments.

Keysight VEE Pro supports all popular programming languages, including Visual Basic, C/C++, Visual C# and all.NET compliant languages.

Keysight VEE Pro supports various instruments and data acquisition devices, and works with surface-mount machines, robots and other manufacturing equipment via the .NET Framework or supplied ActiveX libraries. The .Net Framework (Common Language Runtime and Framework Class Libraries) is installed with Keysight VEE Pro, so it is instantly available.

Keysight VEE Pro can communicate with any instrument from any vendor using GPIB, LAN, USB, RS-232, VXI and LXI, and controls most standard instruments' plug-in cards with an instrument driver, a vendor-supplied DLL or with Keysight VEE Pro's direct IO capability.

Powerful Features for Increased Productivity

MATLAB Script and the MathWorks Signal Processing Toolbox are embedded in Keysight VEE Pro at no additional cost, and come with 1800 MATLAB functions, more than 1000 of the most popular MATLAB analysis and visualization functions preprogrammed as one-click objects.

Built-in MATLAB functions include:

- Numeric computation
- Engineering and scientific graphics (2D, 3D, waterfall, bar, pie)
- Signal processing
- Arrays and matrix math.

Evaluate Keysight VEE Pro

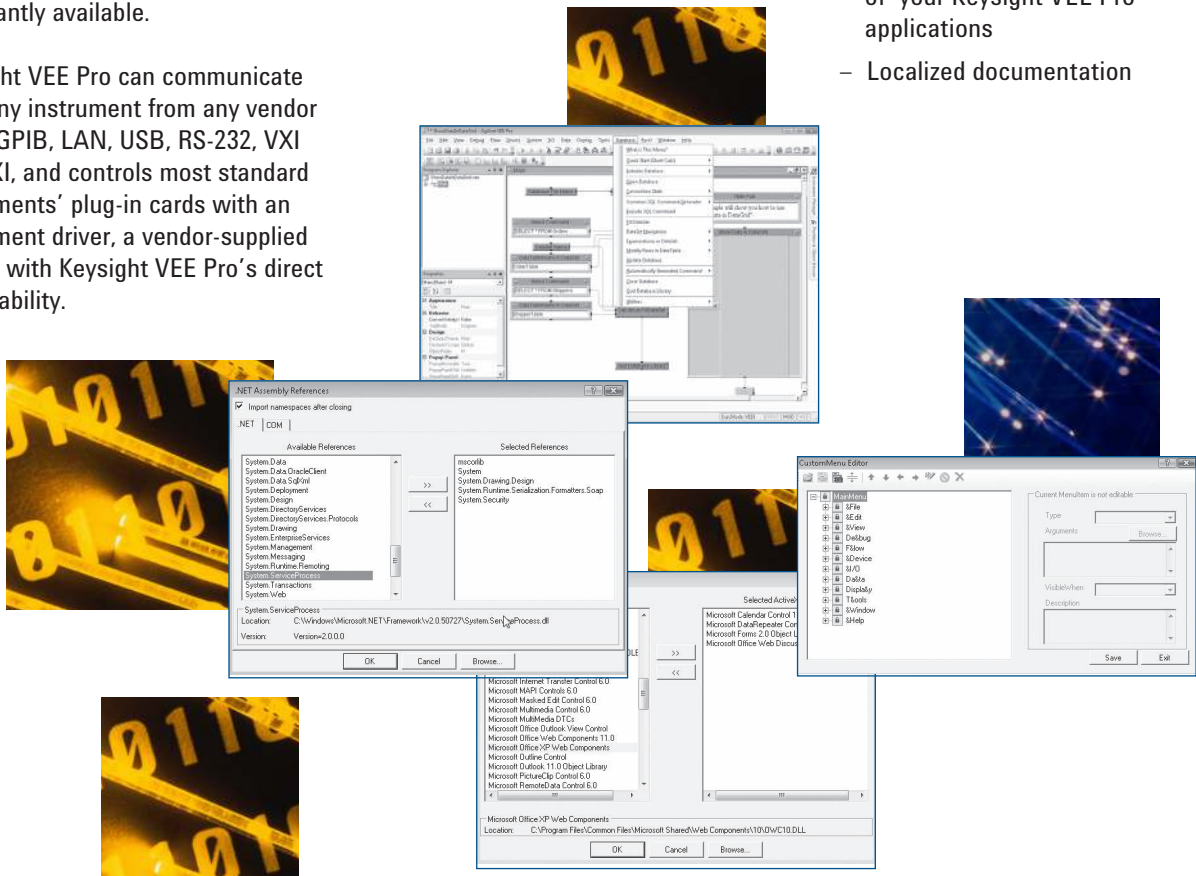
Test a trial version of Keysight VEE Pro and see its benefits for yourself. Download a free, fully functional 30-day evaluation copy, or request a CD to be shipped to you.

For more information, visit www.keysight.com/find/vee_download

A Complete Solution

There is no need to buy expensive add ons to get the full set of Keysight functionality. Keysight VEE includes all the capabilities and support you need to be successful, including:

- Built-in MATLAB Script and Signal Processing Toolbox
- Menu-driven control of Excel and databases
- Support for Microsoft .NET Framework
- Unlimited RunTime distribution of your Keysight VEE Pro applications
- Localized documentation



Minimum System Requirements for Keysight VEE Pro 9.32

Prior to installing Keysight VEE Pro 9.32, Keysight VEE Student, and Keysight VEE Runtime, ensure that your PC meets the following minimum system requirements for installation and operation.

| System Requirements | | |
|---------------------|--|---|
| Operating System | Microsoft Windows XP SP3 or higher | Microsoft Windows 8 (Professional, Enterprise), Microsoft Windows 7 SP1 (Professional, Ultimate, Enterprise), Microsoft Windows Vista SP1 (Business, Ultimate, Enterprise), or higher |
| Architecture | x86 (32-bit), 64-bit for Windows 7 and Windows 8 supportability ¹ | |
| Processor | 450 MHz Pentium II or higher required (800 MHz recommended) | 1 GHz required (2 GHz recommended) |
| Minimum RAM | 128 MB minimum (256 MB or higher recommended) | 1 GB minimum (2 GB recommended) |
| Minimum disk space | 700 MB hard disk free space | |
| Video | Super VGA (800x600) display or higher resolution monitor with 256 colors or more | Support for DirectX 9 graphics with 128 MB graphics memory recommended (Super VGA graphics is supported) |
| Browser | Microsoft Internet Explorer 6.0 or higher | Microsoft Internet Explorer 7 or higher |

Pre-requisite

Microsoft Office 2003, 2007, 2010, or 2013
(If using Office products with Keysight VEE Pro or Keysight VEE Student)

Keysight IO Libraries Suite 16.3.16603.3 or higher
(This is only needed when you communicate with instruments using Keysight VEE)

Microsoft .NET Framework 3.5 SP1 ²

Connectivity options for instrumentation

Keysight 82357B USB/GPIB Interface

Keysight E5810A LAN/GPIB Gateway

Keysight E5810B LAN/GPIB/USB Gateway

Keysight 82350B PCI High-Performance GPIB Interface Card

USB connecting directly to instruments supporting the USB/TMC protocol

Standard RS-232

LAN connect to instruments supporting the VXI-11 protocol

National Instruments I/O hardware using NI 488 version 1.5 (or higher) ³

National Instruments I/O hardware using NI VISA version 3.0 (or higher) ³

1. 32-bit application running on WOW64 (Windows-on-Windows) emulator.

2. Microsoft.NET Framework 3.5 SP1 is not included in Windows 8. The Keysight VEE installation package will prompt you to download and install Microsoft.NET Framework 3.5 SP1 from the Internet. Please refer to <http://msdn.microsoft.com/en-us/library/hh506443.aspx> for more information.

3. Keysight VEE no longer provides official NI supportability. However, the NI interface is still available.

Keysight VEE Comparison Table

| | Keysight VEE 9.32 | | Keysight VEE 8.5 | | | Keysight VEE 8.0 | | Keysight VEE 7.5 |
|---|-------------------|---------|------------------|---------|---------|------------------|---------|------------------|
| | Pro | Student | Pro | Express | Student | Pro | Express | Pro |
| Development Tools | | | | | | | | |
| MultiThreading | ▲ | ▲ | | | | | | |
| Multicore Programming | ▲ | ▲ | | | | | | |
| SCPI Completion | ▲ | ▲ | | | | | | |
| Private UserFunction | ▲ | ▲ | | | | | | |
| Toolbars for VEE Objects | ▲ | ▲ | | | | | | |
| Enhanced Default Preferences dialog box | ▲ | ▲ | | | | | | |
| Color Coding | ▲ | ▲ | ▲ | ▲ | ▲ | | | |
| Modern Integrated Development Environment [IDE] | ▲ | ▲ | ▲ | ▲ | ▲ | | | |
| Microsoft Windows 7 Support | ▲ | ▲ | | | | | | |
| Microsoft Office 2007 Support | ▲ | ▲ | ▲ | ▲ | ▲ | | | |
| Programmatic Properties for VEE Objects | ▲ | ▲ | ▲ | ▲ | ▲ | ▲ | ▲ | |
| Code Completion and Code Insight | ▲ | ▲ | ▲ | ▲ | ▲ | ▲ | ▲ | |
| Minimap | ▲ | ▲ | ▲ | ▲ | ▲ | ▲ | ▲ | |
| Project Explorer Window | ▲ | ▲ | ▲ | ▲ | ▲ | ▲ | ▲ | ▲ |
| .NET ActiveX and IVI-COM Support | ▲ | ▲ | ▲ | ▲ | ▲ | ▲ | ▲ | ▲ |
| Support for Microsoft .NET Controls | ▲ | ▲ | ▲ | ▲ | ▲ | ▲ | ▲ | ▲ |
| The Callable Server Feature | ▲ | | ▲ | | | ▲ | | ▲ |
| The Remote Function Feature | ▲ | | ▲ | | | ▲ | | ▲ |
| Creating RunTime Version of Keysight VEE Programs and Secured Version of Keysight VEE Objects | ▲ | | ▲ | | | ▲ | | ▲ |
| General vTools and USB Modular DAQ vTools | ▲ | ▲ | | | | | | |
| Debugging Tools | | | | | | | | |
| Conditional Breakpoints | ▲ | ▲ | | | | | | |
| Error Call Stack | ▲ | ▲ | | | | | | |
| Output Window | ▲ | ▲ | ▲ | ▲ | ▲ | | | |
| Watch Window and Edit and Continue | ▲ | ▲ | ▲ | ▲ | ▲ | ▲ | ▲ | |
| Breakpoints | ▲ | ▲ | ▲ | ▲ | ▲ | ▲ | ▲ | ▲ |
| Automatic Error Handling | ▲ | ▲ | ▲ | ▲ | ▲ | ▲ | ▲ | ▲ |
| Show Data Flow and Show Execution Row | ▲ | ▲ | ▲ | ▲ | ▲ | ▲ | ▲ | ▲ |
| Line Probe and Object Probe | ▲ | ▲ | ▲ | ▲ | ▲ | ▲ | ▲ | ▲ |
| Step-into, Step-out and Step-over | ▲ | ▲ | ▲ | ▲ | ▲ | ▲ | ▲ | ▲ |
| Connectivity Tools | | | | | | | | |
| LXI Support | ▲ | ▲ | | | | | | |
| Industry-standard Connectivity | *1 | *1 | *1 | *2 | *1 | *1 | *2 | *3 |
| Dynamically Change VISA Interface and Address | ▲ | ▲ | ▲ | ▲ | ▲ | | | |
| Using Keysight IO Monitor to Monitor Instant Communications | ▲ | ▲ | ▲ | ▲ | ▲ | | | |
| Instrument Manager Auto-detect and Configure of Instruments | ▲ | ▲ | ▲ | ▲ | ▲ | ▲ | ▲ | ▲ |
| VEE I/O Configuration File Saved with Program | ▲ | ▲ | ▲ | ▲ | ▲ | ▲ | ▲ | ▲ |
| Other Tools | | | | | | | | |
| Integrated Database Library | ▲ | ▲ | | | | | | |
| Custom Menu in XML Format | ▲ | ▲ | | | | | | |
| MATLAB 2007a Support | ▲ | ▲ | ▲ | ▲ | ▲ | | | |
| Built-in MATLAB Engine | ▲ | | ▲ | | | ▲ | | ▲ |
| MATLAB Script Objects | ▲ | *4 | ▲ | | *4 | ▲ | | ▲ |
| Integrated Excel Library | ▲ | ▲ | ▲ | ▲ | ▲ | ▲ | ▲ | ▲ |

*1 - GPIB, RS-232, GPIO, USB, LAN, VXI

*3 - GPIB, RS-232, GPIO, USB, LAN, VXI

*2 - Keysight USB only

*4 - Support only when MATLAB is installed on your machine

Keysight VEE Education 9.32 has all the features of Keysight VEE Pro 9.32 and comes packaged with 10 standalone licenses. Keysight VEE 9.32 does not come with an express version.

Ordering Information

Note: All products listed below are structured as options under the W4000D product number.

| Core product | Notes |
|--|--|
| Keysight VEE Pro 9.32 Software (W4000D-1TP) | Includes the full feature of Keysight VEE Pro 9.32 CD and Quick Start Guide (6 languages) |
| Keysight VEE Pro 9.32 Student Software (W4000D-2TP) (for students only) | Includes the full feature of Keysight VEE Student 9.32 CD and Quick Start Guide (6 languages) |
| Keysight VEE Pro Education 9.32 (W4000D-3TP) (for education customers only) | Includes 10 licenses of Keysight VEE Pro 9.32 and Quick Start Guide (6 languages) |
| Upgrade licenses | Notes |
| Upgrade from Keysight VEE Pro 8.5 to Keysight VEE Pro 9.32 (W4000D-5TP) | Includes CD and Quick Start Guide (6 languages) |
| Upgrade from Keysight VEE Pro 8.0 to Keysight VEE Pro 9.32 (W4000D-6TP) | Includes CD and Quick Start Guide (6 languages) |
| Upgrade from Keysight VEE Pro 7.5 & below to Keysight VEE Pro 9.32 (W4000D-7TP) | Includes CD and Quick Start Guide (6 languages) |
| Upgrade from Keysight VEE Express to Keysight VEE Pro 9.32 (W4000D-8TP) | Includes CD and Quick Start Guide (6 languages) |
| Additional options | Notes |
| Keysight VEE Education 9.32 10-license option (W4000D-4TP) | Includes Software Entitlement Certificate to add on 10 licenses to VEE Education 9.32 (W4000D-3TP) |
| *No Documentation/Education Package (W4000D-0B0) | Includes Software Entitlement Certificate only/Basic Education package only (default for W4000D-2TP and W4000D-4TP) |

For additional ordering information, technical policy, part numbers, and pricing assistance please refer to:
www.keysight.com/find/vee

myKeysight

myKeysight

www.keysight.com/find/mykeysight

A personalized view into the information most relevant to you.



www.axiestandard.org

AdvancedTCA® Extensions for Instrumentation and Test (AXIe) is an open standard that extends the AdvancedTCA for general purpose and semiconductor test. Keysight is a founding member of the AXIe consortium. ATCA®, AdvancedTCA®, and the ATCA logo are registered US trademarks of the PCI Industrial Computer Manufacturers Group.



www.lxistandard.org

LAN eXtensions for Instruments puts the power of Ethernet and the Web inside your test systems. Keysight is a founding member of the LXI consortium.



www.pxisa.org

PCI eXtensions for Instrumentation (PXI) modular instrumentation delivers a rugged, PC-based high-performance measurement and automation system.



Three-Year Warranty

www.keysight.com/find/ThreeYearWarranty

Keysight's commitment to superior product quality and lower total cost of ownership. The only test and measurement company with three-year warranty standard on all instruments, worldwide.



Keysight Assurance Plans

www.keysight.com/find/AssurancePlans

Up to five years of protection and no budgetary surprises to ensure your instruments are operating to specification so you can rely on accurate measurements.



www.keysight.com/quality

Keysight Technologies, Inc.
DEKRA Certified ISO 9001:2008
Quality Management System

Keysight Channel Partners

www.keysight.com/find/channelpartners

Get the best of both worlds: Keysight's measurement expertise and product breadth, combined with channel partner convenience.

www.keysight.com/find/vee

For more information on Keysight Technologies' products, applications or services, please contact your local Keysight office. The complete list is available at: www.keysight.com/find/contactus

Americas

| | |
|---------------|------------------|
| Canada | (877) 894 4414 |
| Brazil | 55 11 3351 7010 |
| Mexico | 001 800 254 2440 |
| United States | (800) 829 4444 |

Asia Pacific

| | |
|--------------------|----------------|
| Australia | 1 800 629 485 |
| China | 800 810 0189 |
| Hong Kong | 800 938 693 |
| India | 1 800 112 929 |
| Japan | 0120 (421) 345 |
| Korea | 080 769 0800 |
| Malaysia | 1 800 888 848 |
| Singapore | 1 800 375 8100 |
| Taiwan | 0800 047 866 |
| Other AP Countries | (65) 6375 8100 |

Europe & Middle East

| | |
|----------------|---------------|
| Austria | 0800 001122 |
| Belgium | 0800 58580 |
| Finland | 0800 523252 |
| France | 0805 980333 |
| Germany | 0800 6270999 |
| Ireland | 1800 832700 |
| Israel | 1 809 343051 |
| Italy | 800 599100 |
| Luxembourg | +32 800 58580 |
| Netherlands | 0800 0233200 |
| Russia | 8800 5009286 |
| Spain | 0800 000154 |
| Sweden | 0200 882255 |
| Switzerland | 0800 805353 |
| | Opt. 1 (DE) |
| | Opt. 2 (FR) |
| | Opt. 3 (IT) |
| United Kingdom | 0800 0260637 |

For other unlisted countries:
www.keysight.com/find/contactus
(BP-07-10-14)

