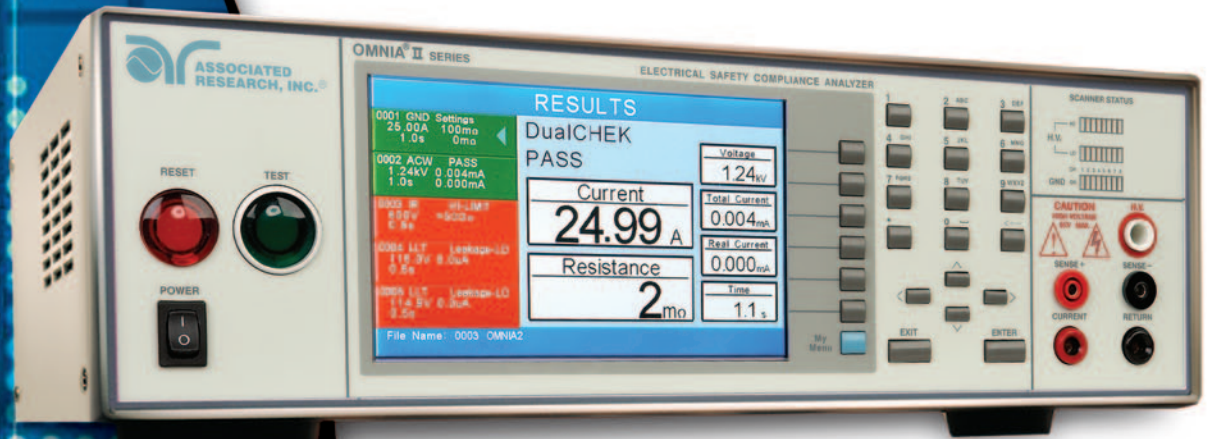


INSTRUMENTS FOR

ELECTRICAL SAFETY COMPLIANCE TESTING



HI POT TESTERS

GROUND BOND TESTERS

INSULATION RESISTANCE TESTERS

LINE LEAKAGE TESTERS

MEDICAL TEST SYSTEMS

HV/HC SCANNING MATRICES

SOFTWARE SOLUTIONS

FUNCTIONAL RUN TESTERS

CUSTOM INSTRUMENTS





Electrical Safety Compliance Software

Software that works in tandem with Associated Research, Inc.

Testers to automate a testing workstation. Autoware® allows you to capture, store and analyze test data and results!

Autoware II is a user friendly software solution designed to work with Associated Research's OMNIA® II, OMNIA®, LINECHEK® II, and SC6540 instruments. Autoware II software automates testing procedures and increases production line efficiency by providing the ability to manage and remotely program instruments. Autoware II allows for the automatic loading of test files and the ability to drag and drop test files to and from the instrument and PC. It also allows for the operation and monitoring of the instrument in real time. Autoware II provides the backup assurance manufacturers need to prove their equipment meets electrical safety requirements established by safety agencies by allowing for statistical analysis, advanced print out, and archival of test data.

Autoware II is also compatible with Associated Power Technologies, Inc.'s 6000, 7000 & 300XAC series of AC power sources for RUN and LLT testing.



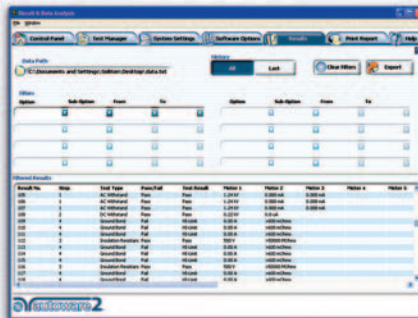
Features and Benefits

- Choice of Ethernet, USB/RS-232 or GPIB communication interfaces
- Graphical Drag and Drop User Interface
- Batch Processing
- Automated Instrument Identification and Setup
- Line Leakage Test Auto Fill Feature
- Pre-configured Instrument Verification Files
- Customizable Menu Display
- Two Versions Available (Full or Data Logging)
- Intelligent Error Handling
- Improved Prompt and Hold Feature Includes Multimedia Prompts

Control Panel Screen



Results Screen



System Settings



Autoware S9870 is used in tandem with Associated Research Inc.'s QUADCHEK® II, HypotMAX®, HypotULTRA® III, LINECHEK® and RUNCHEK® series of instruments.

**We have local sales offices throughout
the world to serve you more efficiently.**

To find your nearest representative visit the
"Local Sales Offices" section of our web site at
www.asresearch.com or call us toll-free at 1-800-858-8378



13860 West Laurel Drive,
Lake Forest, IL U.S.A. 60045

Tel: +1-847-367-4077 Fax: +1-847-367-4080

E-mail: info@asresearch.com

For more information visit us at www.asresearch.com
or call us toll-free at 1-800-858-TEST(8378)