



Avionics Databus
Solutions

EasyDLE EasyLOAD-429 PBA.pro-429-LDR

General Features

EasyDLE, EasyLoad-429 and PBA.pro-429-LDR offer flexible solutions for today's ARINC615-3/4 Data Loading applications using AIM's ARINC429 Interface Modules.

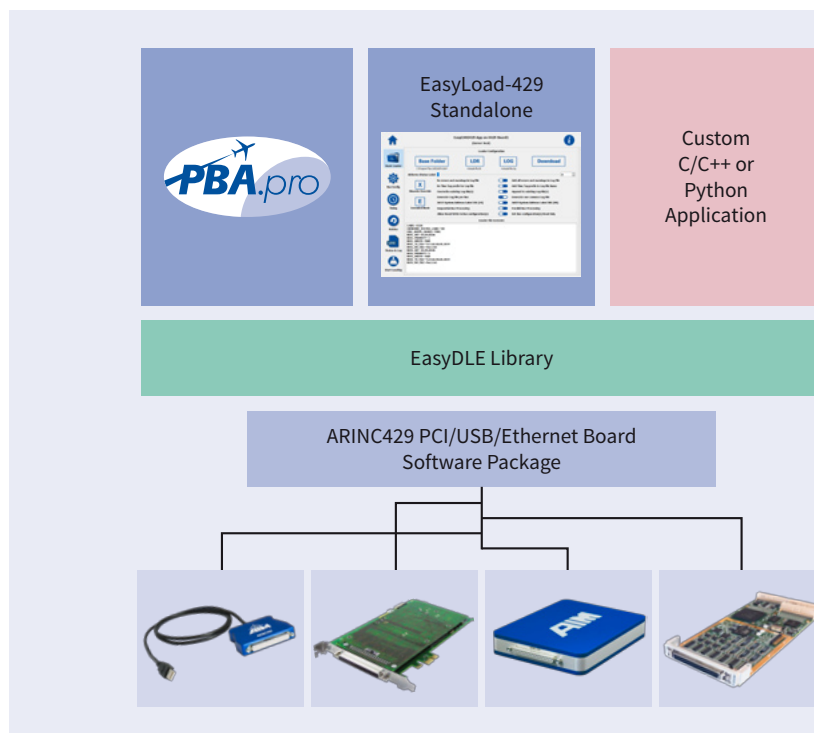
The EasyDLE is the underlying core Data Loading Engine, used for the standalone EasyLoad-429 Data Loader application and the PBA.pro-429-LDR (PBA.pro Data Loader component). Customer Applications, written in C/C++ or Python, can be implemented using the EasyDLE library. AIM's ARINC429 interface modules are supported with the standard Application Interface (API) libraries included in the module Board Software Package (BSP) for Windows and LINUX operating systems.

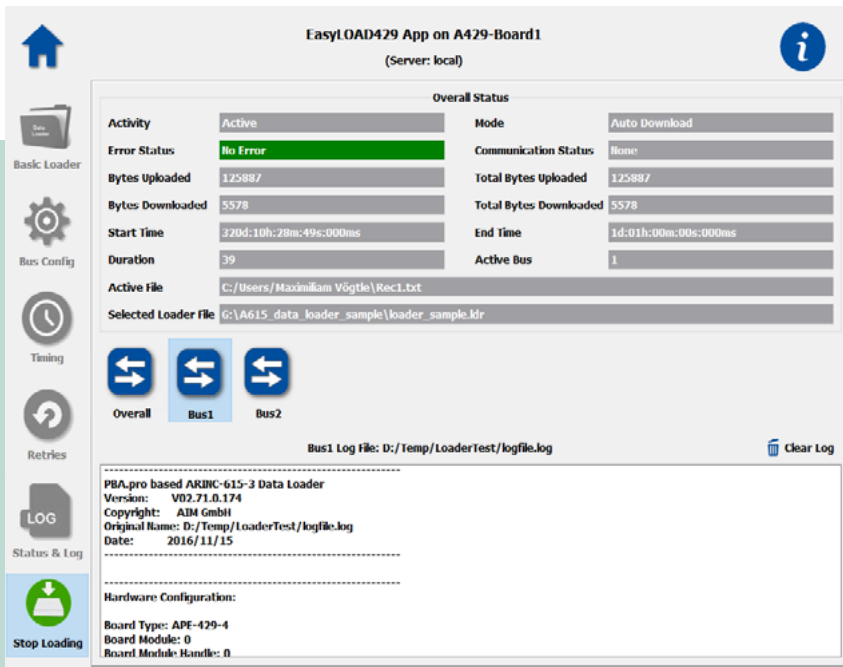
General ARINC615-3/4 Protocol Support

- Downloading files using automatic download mode
- Uploading files using automatic upload mode
- Flexible transmission sequences using control mode
- ARINC615-3/4 commands supported in control mode:
 - Read Block
 - Write Block
 - Request Status
 - Load Complete
 - Disc Commands

Data Loading Engine Features

- Manual configuration of Data Loaders and buses
- Automatic loader and bus set-up by parsing ARINC615-3/4 configuration file
- Multi-threaded bus processing
- Bus specific configuration of time-out and retry requirements
- Subscription for transmission events on single buses using custom event handlers
- Event processing decoupled from protocol handling to minimize impact of user event processing on reactivity
- Fully scriptable using Python scripting language





Ordering Information

EasyDLE

C/C++ Import and Runtime Libraries, Header Files and Python Wrapper Files for interfacing the 615-3/4 Data Loading Protocol Engine from 32/64-bit customer applications under Windows7/8/8.1/10 and Linux.

Note: The license is tied to the Serial Number of a single AIM ARINC429 interface or to a USB Dongle.

The maximum number of ARINC429 Channels per license is 32.

For the support of more than 32 ARINC429 Channels using EasyDLE, please contact the factory.

EasyLoad-429

Standalone ARINC615-3/4 Data Loader Software for AIM ARINC429 Interface, Executable for Windows7/8/8.1/10 and Linux.

Note: The license is tied to the Serial Number of a single AIM ARINC429 interface or to a USB Dongle.

The maximum number of ARINC429 Channels per license is 32.

For the support of more than 32 ARINC429 Channels using via EasyLoad-429, please contact the factory.

PBA.pro-429-LDR

PBA.pro Component for adding ARINC615-3/4 Data Loader Capability to PBA.pro ARINC429 Resource Components.

Note: The license is required once per PBA.pro System and requires the corresponding PBA.pro-ARINC429-x resource component licenses per ARINC429 Interface which are used by the PBA.pro-429-LDR component.

EasyDLE Key Features

The EasyDLE software library provides avionics developers and airline operators with a tool that enables the implementation of custom applications for Data Loading over the ARINC615-3/4 protocol. With ARINC429 as physical layer of the ARINC615-3/4 protocol, equipment to be loaded is accessed using AIM Standard ARINC429 devices located on a local host or controlled over Ethernet. Each transmit/receive channel pair represents 1 ARINC615-3/4 Data Loading bus.

- Software library for Windows/Linux OS with Application Programming Interface for C/C++ based applications
- Feature complete, object-oriented Python interface wrappers for scripting
- Free assignment of Data Loaders and their buses to ARINC429 devices and corresponding physical transmit/receive channels
- Simultaneous loading on multiple buses

EasyLOAD-429 and PBA.pro-429-LDR GUI Key Features

- Easy to use graphical user interface
- Fast and easy set-up and configuration of loaders and buses either manually or via configuration files
- Loader projects storable to disk for quick restoring or distribution to other hosts
- Extensive status displays for loading sequences and additional logging to disc for later verification
- Simultaneous control of multiple loaders possible
- Advanced analysing capabilities through recording and decoding functionality of ARINC615 bus traffic

Additional PBA.pro-429-LDR Features:

- Fully scriptable (using the PBA.pro-TSM option)
- Support for ARINC429 Bus Monitoring/Recording (using the PBA.pro-ARINC429-x option)

AIM Office Contacts:

AIM GmbH

Sasbacher Str. 2
D-79111 Freiburg / Germany
Phone +49 (0)761 4 52 29-0
Fax +49 (0)761 4 52 29-33
sales@aim-online.com

AIM GmbH – Munich Sales Office

Terofalstr. 23a
D-80689 München / Germany
Phone +49 (0)89 70 92 92-92
Fax +49 (0)89 70 92 92-94
salesgermany@aim-online.com

AIM UK Office

Cressex Enterprise Centre, Lincoln Rd.
High Wycombe, Bucks. HP12 3RB / UK
Phone +44 (0)1494-446844
Fax +44 (0)1494-449324
salesuk@aim-online.com

AIM USA LLC

Seven Neshaminy Interplex
Suite 211 Trevose, PA 19053
Phone 267-982-2600
Fax 215-645-1580
salesusa@aim-online.com