

SERIES 86

BOND HEADS

LARGE.
PRECISE.
FLEXIBLE.

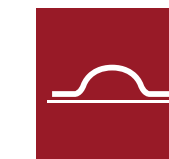


58
SERIES

F7AS
BONDTEC

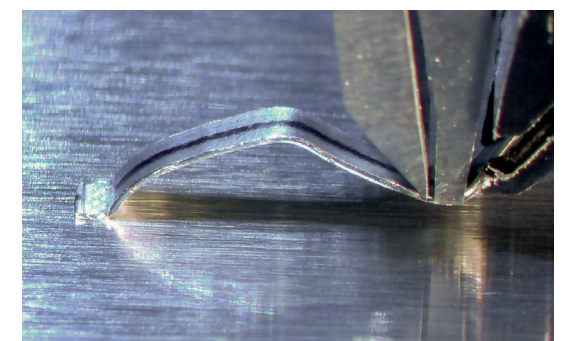
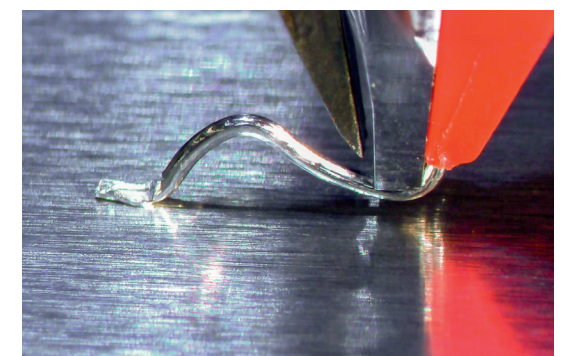
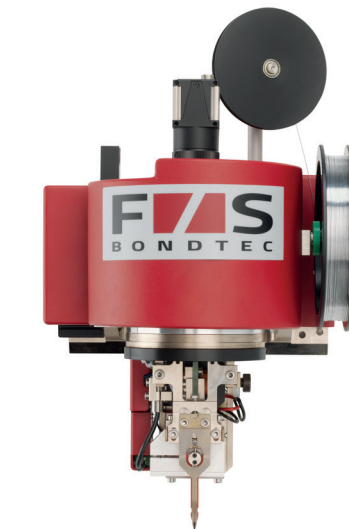
8650 – Heavy Wire

- » Wedge-Wedge bonding for Aluminum from 100 up to 500 µm diameter // Copper from 100 up to 300 µm



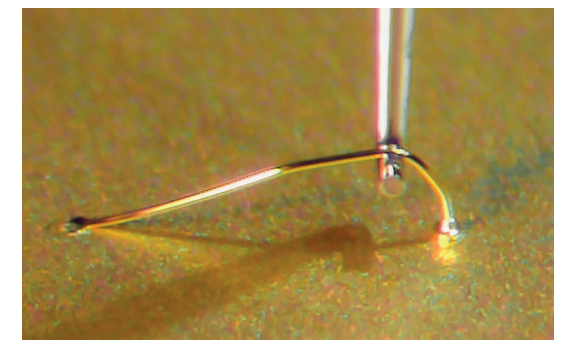
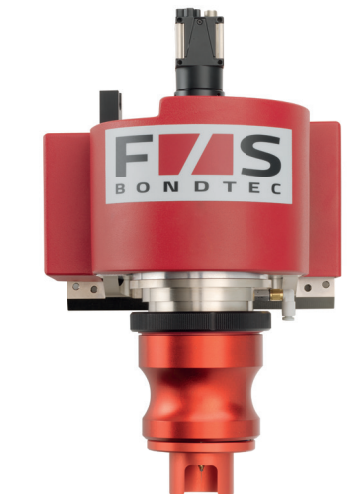
8650_{HR} – Heavy Ribbon

- » Wedge-Wedge bonding for Aluminum ribbon until 2 mm



5600i – Pull- & Sheartester

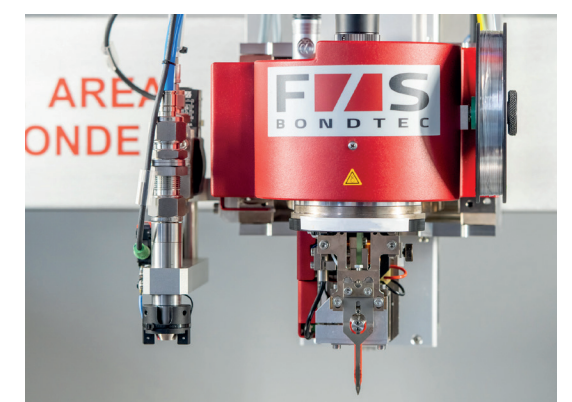
- » Manual and automatic testing of thin and heavy wire bonds
- » Test head with easily changeable cartridges
- » **Patented solution** for automatic angle correction



EXTENSIONS

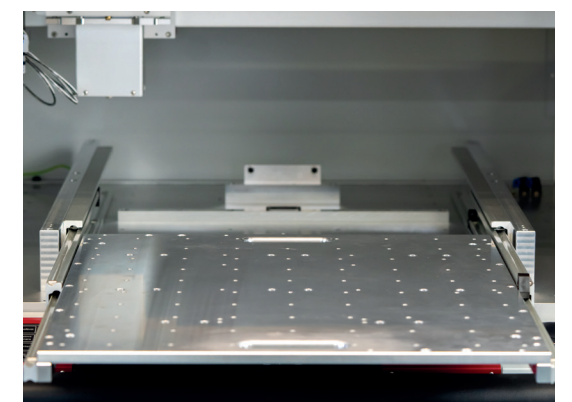
CO₂ JETBOX

A CO₂ snow jet cleaning module can be installed on the 8650 or 8650HR bond head. This gentle and highly effective cleaning method is ideally suited to remove mineral and organic contamination from bond surfaces.



EXTENDABLE TABLE

An extendable bonding table is available as an alternative to the component holder directly in the bonding area. This makes loading and unloading large and heavy components outside the machine possible and considerably easier.



UNIVERSAL VACUUM CLAMP

A workholder with vacuum and additional manual clamping ensures that the components are held perfectly during bonding. Variable slot nuts allow for the simplest adjustment to a wide variety of component formats.

